

Point-Of-Sale (POS) Application

A POS system may be integrated to a GV-system through the GV-Data Capture box. Through the integration, you can investigate a transaction with transaction data overlaying on a video footage, by either live viewing or playing back.

POS System Connection

POS systems vary in different forms, with a receipt printer attached internally or externally (also called cash register), with the serial or parallel port, and with the text or graphic mode.

For the information on attaching the text-mode POS system to GV-system, visit the related links below.

To access	Visit
Serial POS System	http://www.geovision.com.tw/002/en/faq/pos/pdf/Serial_POS.pdf
Parallel POS System	http://www.geovision.com.tw/002/en/faq/pos/pdf/Parallel_POS.pdf
Serial Cash Register	http://www.geovision.com.tw/002/en/faq/pos/pdf/Seria1_Cash.pdf
Parallel Cash Register	http://www.geovision.com.tw/002/en/faq/pos/pdf/Parallel_Cash.pdf

To attach the graphic-mode POS system to GV-system, first check the POS system has the following two characteristics:

- Windows operation system
- Serial port (COM port) for output

For the attachment of the graphic-mode POS system, an additional USB keypro and the *POS Data Sender* program are required. This program is included in the installation CD and explained later in this section.

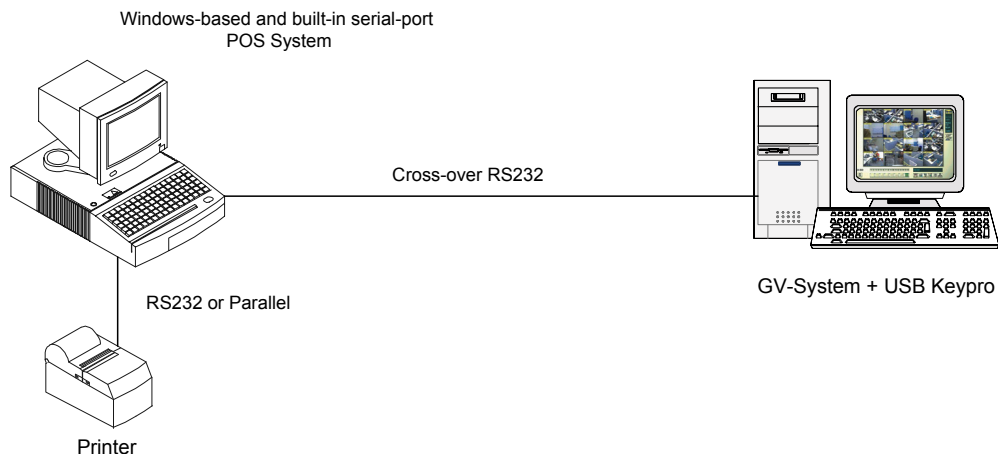
If you are not sure what printing mode of your POS system, refer to the documentation of *The Printing Mode of POS System/Cash Register* at this link:

http://www.geovision.com.tw/002/en/faq/pos/pdf/The_printing_mode_of_POS_system_cash_register.pdf

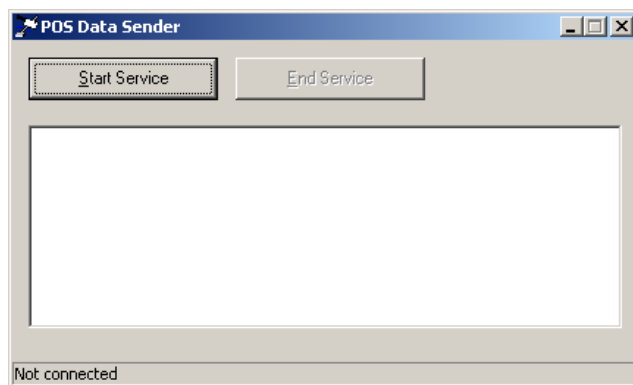
POS Data Sender

To attach the graphic-mode POS system with the Windows operation system and serial output to GV-system, follow the steps below.

1. Connect the POS system as illustrated below.



2. Insert the Installation CD to the POS system.
3. Find the DVRPOS folder, run the Setup program included inside, and follow the on-screen instructions to complete the installation.
4. Go to Windows Startup, point to Programs, select DVR-POS, and then click DVR POS Driver to display the following window.



5. Click Start Service, and then select the COM port to send graphic data to the GV-system.

Note: The GV-system must be configured and ready for this application. To set up the GV-system, see the *Setting a POS System* section below.

Setting a POS System

To connect a POS system to GV-system, follow the steps below.

1. Click the Configure button, point to POS Application Setting, and then select POS Device Setup to display the POS Server Setup window.

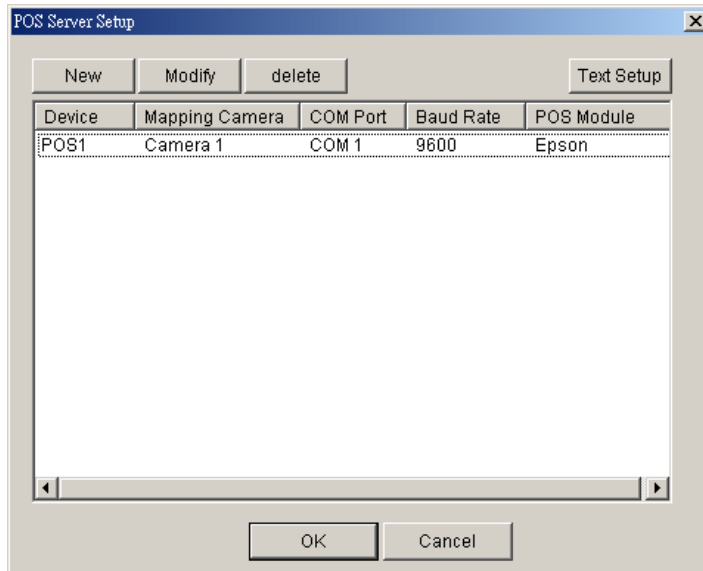
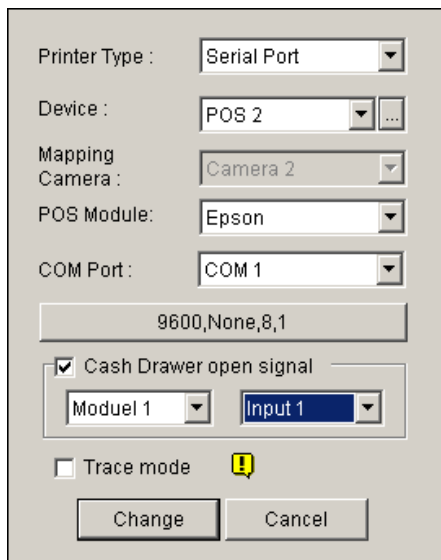


Figure 3-1 POS Server Setup

2. Click the New tab in the upper part of the window to display the following dialog box.



- **Printer Type:** Select Serial Port or Parallel Port that the POS system belongs to.
- **Device:** Assign the POS system to a camera screen. POS 1 displays the images and data on the Camera 1 screen; POS 2 on the Camera 2 screen, and so on. Click the button [...] next to the item to rename the device.
- **POS Module:** Select the printer attached to the POS system. If it's not Epson, select General

for other brands. If the printing is in the graphic mode, choose GraphMode. For this application, an additional USB keypro and the *POS Data Sender* program are required. Refer to the *POS System Connection* section for details.

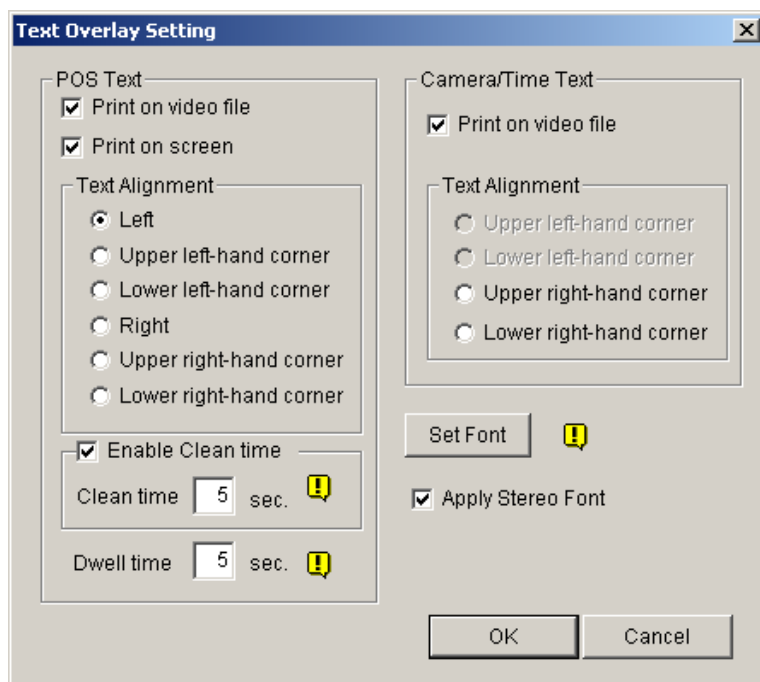
- **COM Port:** Select the COM port that the POS system is connected to.
- **The parameter button:** Click the button to configure Baud Rate, Data Bits, Parity, and/or Stop Bits to match those of the POS system, or keep them as defaults.
- **Cash Drawer Open Signal:** This option is only available when an input module is configured in the main system. Assign the input module connected to the cash drawer. Every time when the cash drawer is opened, a signal will be sent to the main system and recorded in System Log for later retrieval.
- **Trace Mode:** Check this item only after getting the recommendation from our technical support staff.

3. After above settings, click Add to add the POS system to the main system.

Superimposing POS Data onto Camera Screen

Follow these steps to set camera screens with POS text data:

1. Open the POS Device Setup window. Refer to figure 3-1.
2. Click the Text Setup tab to set text font and position of the data:



[POS Text]

- **Print on video file:** When this option is enabled, POS data will be overlaid on the recorded video file.
- **Print on screen:** When the option is enabled, POS data will be overlaid on the transaction scene.
- **Text Alignment:** Select how you want the POS text data to be aligned on a view screen.
- **Enable clean time:** When the item is checked, after the specified time in seconds that if GV-system hasn't received the transaction data from your POS system, the already-displayed text data will disappear from the camera screen, i.e. in case the cashier stops entering the transaction data.
- **Dwell time:** Specify the amount of time in seconds that the text stays on a view screen before the next transaction.

[Camera/Time Text]

- **Print on video file:** When this option is enabled, camera ID and location name will be overlaid on the recorded video file.
- **Text Alignment:** Select how you want the camera information to be aligned on a view screen.

[Set Font] Click the Set Font button to setup the font for POS and Camera/Time text. The option Apply Stereo Font makes texts stand out from the background by giving white-edge to the texts.

POS Field Filter

POS Field Filter allows you to create a column of a transaction item in System Log. It further filters the transaction conditions based on your criteria, and displays the results under the created column. To set up the function, follow the steps below.

1. Click the Configure button, point to POS Application Setting, and then select POS Field Filter to display the following window.

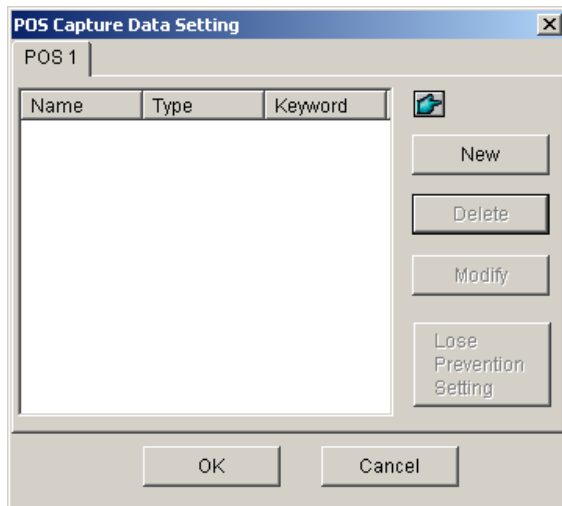
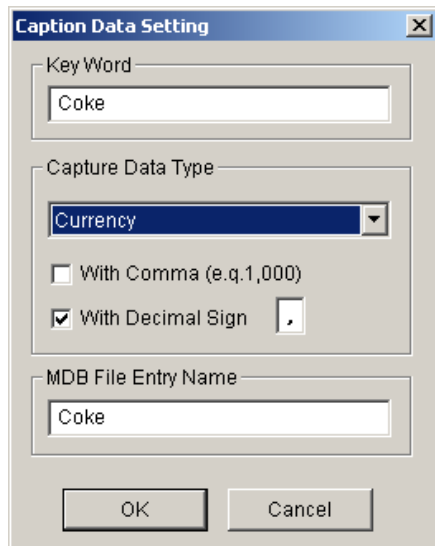


Figure 3-2 POS Capture Data Setting

2. Click the New button to display the following dialog box.



[Key Word] Enter a meaningful keyword that matches exactly one of transaction items/texts in the receipt. The field is case sensitive. Suppose we enter Coke. Every item/text matching to Coke will be screened out.

[Capture Data Type] Select the type of data followed by the specified transaction item/word: **Numeric, Currency or Alphabetic**. If the specified transaction item/text is followed by a price amount, choose Numeric or Currency. If it is followed by alphabets, choose Alphabetic.

- **With Comma:** If there are commas in a price amount, check the option.
- **With Decimal Sign:** If there are decimal signs in a price amount, check the option.
- **With Space:** The option is only available when you choose Alphabetic. If there is space among a series of characters, check the option.

[MDB File Entry Name] Enter a file name to store the data.

3. Click OK to apply the above settings.
4. Open System Log.

In System Log, for this example, you can see the last column created for the transaction item Coke. The transactions matching the search criteria will be displayed under the created column.

Live Log Browser - Recycle Log: 7/20/2004 11:42			
Monitor	System	Login	Counter
0/2004	5:51:...	Coke	1,00
0/2004	5:51:...	SUBTOTAL	1,00
0/2004	5:51:...	=====	
0/2004	5:51:...	TOTAL	1,00
0/2004	5:51:...	IN EURO:	0,51
0/2004	5:51:...	CASH	1,00
0/2004	5:51:...	ITEMS PURCHASED: 1	
0/2004	5:51:...	Thank You	
0/2004	5:51:...	FOR TESTING AND SAVING WITH US	
0/2004	5:51:...	St:STORE Rg:1 Ch:1234 Tr:3049	
0/2004	5:51:...	*****17:50*****20/07/00*****	
0/2004	5:51:...	-----	Stop Tran...
0/2004	5:51:...	-----	Start Tra...
0/2004	5:51:...	CALYPSO	

Abnormal Transaction Alerts

When an abnormal transaction of the specified transaction item occurs, this function can automatically activate the output device and send out assigned E-Mail/SMS/Pager alerts. To set up this function, follow the steps below.

1. Click the **Configure** button, point to **POS Application Setting**, and then select **POS Field Filter** to display the **POS Capture Data Setting** window. See figure 3-2.
2. Click the **Loss Prevention Setting** button to display the following dialogue box.

DVD Player - Loss Prevention Setting [X]

☒ Alarm Conditions

>= 10000

And

<= 100000

☒ Alarm Output

Moduel 1 Output 1

Alert Message

Abnormal Transaction

OK Cancel

[Alarm Conditions] Click this option and define the price range for an alarm condition. For this example, when the price amount in a transaction is *great than or equal to* (\geq) 10000 and *less than or equal to* (\leq) 100000, the assigned alarm will be activated.

[Alarm Output] Assign an installed output module for the application.

[Alert Message] Enter a desired alert message. To set up a notification type (E-Mail/Hotline/SMS), refer to *Send Alerts Approach* in Chapter 2 on page 19.